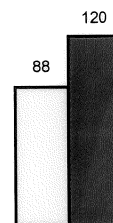
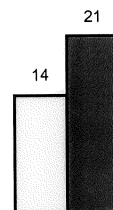


*College of Natural Resources
Six Years of Growth*

Number of Faculty



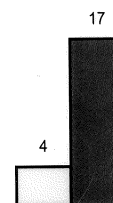
*Cooperative Extension
Specialists (full time)*



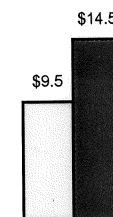
*Annual Budget
(Million \$)*



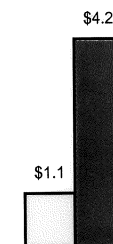
*Chairholders &
Distinguished Professors*



*Endowments
(Million \$)*



*Private Giving
(Million \$)*



*Enrollment of non-CNR
Students in Courses
Taught by CNR Faculty*



Starting Point Today

NEW PATHWAYS AT CNR

- ❖ *Restructured CNR into eight divisions*
- ❖ *Established eight principles of excellence to guide the College*
- ❖ *Formed key strategic alliances with:*
 - *Novartis Agricultural Discovery Institute to create more productive, nutritionally enhanced food through genetic engineering*
 - *Lawrence Berkeley National Laboratory and USDA to explore impact of food-borne nutrients and toxicants on human genetic expression*
 - *Nature Conservancy of California to expand public service in conservation science and wildland management*
 - *Division of Agriculture and Natural Resources, School of Public Health and College of Engineering to support water quality research and education*
 - *UC Sustainable Agriculture Research and Education Program to enhance food security and pursue agriculture collaborations with non-governmental organizations*
- ❖ *Created new degrees in:*
 - *Environmental Science - B.S. Offered Fall 1998*
 - *Environmental Science and Policy - Masters (Pending)*
 - *Environmental Planning - Masters (Pending)*
 - *Microbial Biology - B.S. (Pending)*
 - *Microbial Biology - Ph.D. (Pending)*
 - *Toxicology - B.S. (Pending)*
 - *Toxicology - Ph.D. (Pending)*
 - *Environmental Economics and Policy - B.S. Offered Fall 1997*
 - *Molecular Environmental Biology - B.S. Offered Fall 1996*
- ❖ *Established six centers to foster the continuum between fundamental research and cooperative extension outreach:*
 - *Biological Imaging Facility*
 - *Center for Biological Control*
 - *Center for Assessment & Monitoring of Forest and Environmental Resources (CAMFER)*
 - *Center for Forestry*
 - *Center for Sustainable Resource Development*
 - *Center for Weight and Health*
- ❖ *Reinstated Forestry Accreditation*